

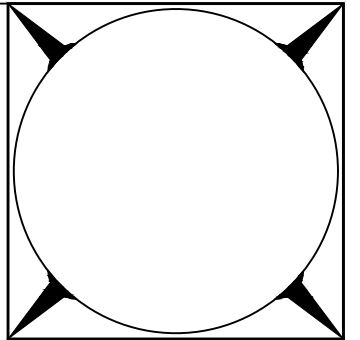


GENERAL AND SITE NOTES

1. THE PURPOSE OF THIS PROJECT IS TO CONSTRUCT A CONFINED AQUIFER AUGMENTATION WELL TO WITHDRAW FROM RGDSS MODEL LAYER 2, THE UPPER-MOST CONFINED AQUIFER.
2. THE TOTAL DEPTH OF THE AUGMENTATION WELL WILL BE APPROXIMATELY 220'. IN THIS AREA, THE CONFINING CLAY LAYER SEPARATING RGDSS MODEL LAYERS 1 AND 2 LIES FROM APPROXIMATELY 120 TO 125' IN DEPTH.
3. A 28"  $\phi$  STEEL SURFACE CASING WILL BE INSTALLED TO THE BOTTOM OF THE CONFINING CLAY LAYER. A GROUT SEAL WILL BE INSTALLED IN THE ANNULAR SPACE BETWEEN THE SURFACE CASING AND THE BOREHOLE WALL. THE TOTAL LENGTH OF SURFACE CASING WILL BE APPROXIMATELY 127'.
4. THE PUMP CHAMBER CASING WILL CONSIST OF 20"  $\phi$  SMOOTH STEEL FROM THE SURFACE TO A DEPTH OF 130'. A 304 STAINLESS STEEL WELL SCREEN WILL BE INSTALLED FROM 130' TO 220'. THE SPECIFIC TYPE AND SLOT SIZE OF THE STAINLESS STEEL WELL SCREEN WILL BE DETERMINED AFTER THE WINNING BID HAS BEEN SELECTED. THE PROJECT SPECIFICATIONS DOCUMENTS CONTAINS TWO SCREEN TYPES FOR BIDDING PURPOSES, A JOHNSON BRAND WIRE WRAPPED TYPE AND A ROSCOE MOSS BRAND LOUVERED TYPE. FOR BIDDING PURPOSES, JOHNSON BRAND SHUR PAK 10-12 FILTER PACK HAS BEEN SELECTED. THE SIZE RANGE OF THIS FILTER MATERIAL IS 0.079 to 0.066".
5. AT THE BASE OF THE WELL A GROUT PAD WILL BE PLACED FROM A DEPTH OF 217' to 220'.
6. THE PUMP AND MOTOR SELECTED FOR BIDDING PURPOSES IS A FRANKLIN ELECTRIC BRAND 75 HP FST 10-FYC ENCLOSED PROPELLOR, 3-PHASE, 480v SUBMERSIBLE. THE ACCOMPANYING VFD IS A FRANKLIN ELECTRIC 75 HP CERUS X-DRIVE MODEL.
7. NO EXCAVATION OR WORK SHALL BEGIN UNTIL THE CONTRACTOR HAS OBTAINED, AT HIS EXPENSE, ANY PERMITS REQUIRED TO PERFORM THE PROPOSED WORK.
8. THE CONTRACTOR SHALL NOT DISTURB AREAS BEYOND THE PROJECT LIMITS.
9. THE APPROXIMATE DISTURBANCE AREA IS 1 ACRE IN SIZE. THE CONTRACTOR SHALL MAINTAIN DRAINAGE DURING CONSTRUCTION AS DIRECTED BY THE ENGINEER. ANY REWORK OF MATERIALS DUE TO LACK OF THIS MAINTENANCE SHALL BE REPAIRED AT THE CONTRACTOR'S EXPENSE.
10. THE PHYSICAL FEATURES WITHIN THE LIMITS OF THE PROJECT HAVE BEEN SHOWN BASED ON THE BEST AVAILABLE INFORMATION AT THE TIME OF DESIGN. THE CONTRACTOR SHALL VERIFY AND BE RESPONSIBLE FOR ALL FEATURES PRIOR TO BEGINNING ANY WORK.
11. THE CONTRACTOR SHALL KEEP ALL OPERATIONS WITHIN THE LIMITS OF THE INDICATED EASEMENTS. THE CONTRACTOR SHALL KEEP EQUIPMENT AND MATERIALS WITHIN THESE LIMITS. CONSTRUCTION ACTIVITIES, STAGING, PARKING, OR OFF-SITE DISPOSAL SHALL NOT ENCROACH UPON PRIVATE OR PUBLIC LANDS WITHOUT WRITTEN APPROVAL FROM THE PROPERTY OWNER OR LAND MANAGEMENT AGENCY.
12. SHOULD ANY QUESTIONS ARISE OR ANY DISCREPANCIES BE NOTED IN THE PLANS, THE ENGINEER SHOULD BE CONSULTED PRIOR TO CONSTRUCTION OF THE AFFECTED ITEMS.
13. THE CONTRACTOR SHALL PROTECT ALL EXISTING SURVEY MONUMENTS FROM DAMAGE DURING CONSTRUCTION OPERATIONS. ANY MONUMENTS DISTURBED BY THE CONTRACTOR SHALL BE RESET AT THE CONTRACTOR'S EXPENSE. THE CONTRACTOR AND THE ENGINEER SHALL NOTE THESE MONUMENTS IN THE FIELD PRIOR TO CONSTRUCTION.
14. ANY DAMAGE TO PUBLIC ROADWAYS SHALL BE REPAIRED IMMEDIATELY AND PRIOR TO CONTINUING OPERATIONS. DUST SHALL BE PROPERLY CONTROLLED, AND ANY MUD OR OTHER MATERIAL TRACKED OR OTHERWISE DEPOSITED ON THE ROADWAY SHALL BE REMOVED DAILY OR AS ORDERED BY THE ENGINEER.
15. IF THE OWNER HAS LIVESTOCK PRESENT ON THE PROPERTY AT THE TIME OF CONSTRUCTION THE CONTRACTOR IS TO CLOSE ANY GATES THEY OPEN WHEN ACCESSING THE JOB SITE.

UTILITY GENERAL NOTES

- 1) THE UTILITIES SHOWN ON THE PLANS ARE PLOTTED FROM THE BEST AVAILABLE INFORMATION AT THE TIME OF DESIGN. AS MANY OF THE UTILITIES ARE PRIVATE SERVICE LINES WITHOUT TRACER WIRE, ACCURATE LOCATES ARE NOT AVAILABLE. THE INFORMATION SHOWN ON THESE PLANS CONCERNING TYPE AND LOCATION OF UTILITIES IS NOT GUARANTEED TO BE ACCURATE OR ALL INCLUSIVE. SOME UTILITIES MAY HAVE BEEN ADDED OR RELOCATED PRIOR TO CONSTRUCTION. IT SHALL BE THE CONTRACTOR'S RESPONSIBILITY TO VERIFY ALL LOCATIONS OF EXISTING STRUCTURES AND UTILITIES SHOWN ON THE DRAWINGS AND ASCERTAIN WHETHER ANY OTHER STRUCTURE AND UTILITIES MAY EXIST. EVERY REASONABLE MEANS SHALL BE USED, INCLUDING FIELD LOCATION OF THE UTILITY USING WHATEVER PROSPECTING MEANS ARE NECESSARY. THE CONTRACTOR ASSUMES RESPONSIBILITY FOR THE PROTECTION OF ALL UTILITIES DURING THE WORK, AND SHALL HOLD THE OWNER AND THEIR CONSULTANTS HARMLESS FOR ANY AND ALL DAMAGES TO UTILITIES ARISING FROM CONSTRUCTION OPERATIONS.
- 2) THE CONTRACTOR SHALL NOTIFY ALL AFFECTED UTILITIES AT LEAST TWO (2) BUSINESS DAYS, NOT INCLUDING THE ACTUAL DAY OF NOTICE, PRIOR TO COMMENCING SUCH OPERATIONS. THE CONTRACTOR SHALL CONTACT THE UTILITY NOTIFICATION CENTER OF COLORADO (UNCC) AT 811 OR 1-800-922-1987, TO HAVE LOCATIONS OF UNCC REGISTERED LINES MARKED BY MEMBER COMPANIES. ALL OTHER UNDERGROUND FACILITIES SHALL BE LOCATED BY CONTACTING THE RESPECTIVE OWNER. UTILITY SERVICE LATERALS SHALL ALSO BE LOCATED PRIOR TO BEGINNING EXCAVATION OR GRADING.
- 3) THE CONTRACTOR SHALL VERIFY AND DOCUMENT THE CONDITION OF EXISTING UTILITIES (VISIBLE FACILITIES) WITH THE ENGINEER AND REPRESENTATIVES FROM THE UTILITY COMPANIES PRIOR TO COMMENCEMENT OF CONSTRUCTION.
- 4) THE CONTRACTOR SHALL FULLY COORDINATE UTILITY WORK WITH THE AFFECTED UTILITY PROVIDER AS APPROPRIATE.



**DAVIS ENGINEERING SERVICE, INC.**

SINCE 1944

**DES**

THIS DRAWING IS THE PROPERTY OF DAVIS ENGINEERING SERVICE, INC. AND IS NOT TO BE LOANED, REPRODUCED, COPIED, OR IN ANY MANNER DISSEMINATED WITHOUT THE WRITTEN APPROVAL OF DAVIS ENGINEERING SERVICE, INC.

CHECKED	AS NOTED	DATE	DATE
		8/23/24	

DAVIS ENGINEERING SERVICE, INC.  
1400 W. ALAMOSA AVENUE  
ALAMOSA, COLORADO 81101  
PHONE: (719) 589-3000  
FAX: (719) 589-1712

REV.	DATE	BY	APP'D.

ELEVATION BASE ASSUMED



CLIENT

Special Improvement District No. 5  
8805 Independence Way  
Alamosa, CO 81101

DRAWN

Large Capacity Augmentation Well #2

Site & Utility Notes

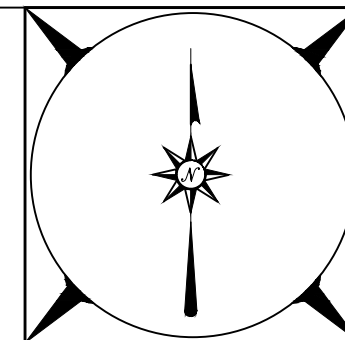




**LEGEND**

- 5' CONTOUR INDEX
- 1' CONTOUR
- x — PROPERTY LINE
- ★ GPS BASE / CONTROL POINT

**EXISTING CONDITIONS SITE MAP**  
Scale 1":300'



**DAVIS ENGINEERING SERVICE, INC.**

DAVIS ENGINEERING SERVICE, INC.  
1400 S. ALAMOSA AVENUE  
ALAMOSA, COLORADO 81101  
PHONE: (719) 589-3004  
FAX: (719) 589-1712

PROJECT	CHECKED	DATE
CMP/WSS	AS NOTED	8/23/24
WSS	APPROVED	CMP

THIS DRAWING IS THE PROPERTY OF DAVIS ENGINEERING SERVICE, INC. AND IS NOT TO BE REPRODUCED, COPIED, OR TRANSMITTED IN ANY FORM OR BY ANY MEANS, WITHOUT THE WRITTEN APPROVAL OF DAVIS ENGINEERING SERVICE, INC.

DATE: \_\_\_\_\_ BY: \_\_\_\_\_

REV: \_\_\_\_\_

ELEVATION BASE ASSUMED

0" 1" 1.5" 2"

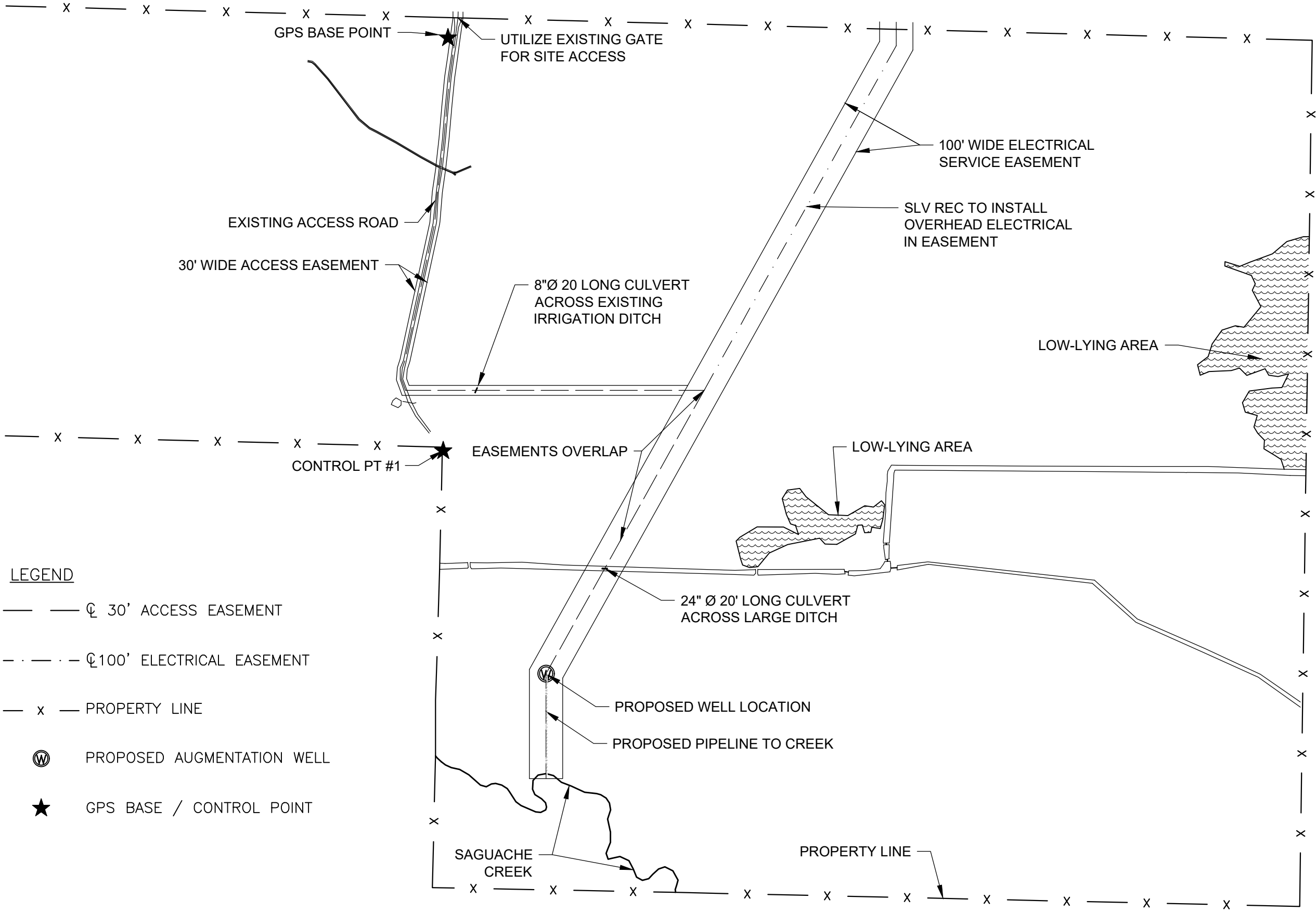


CLIENT  
Special Improvement District No. 5  
8805 Independence Way  
Alamosa, CO 81101

PROJECT  
Large Capacity Augmentation Well #2

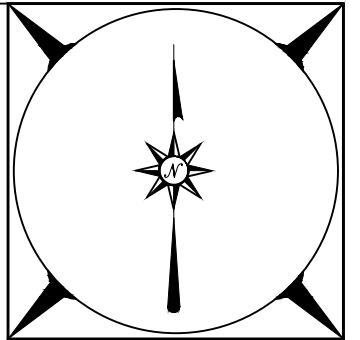
MAP  
Existing Conditions Map





- LEGEND**
- — — — — ⊕ 30' ACCESS EASEMENT
  - - - - - ⊕ 100' ELECTRICAL EASEMENT
  - x — — — — — PROPERTY LINE
  - ⊕ PROPOSED AUGMENTATION WELL
  - ★ GPS BASE / CONTROL POINT

**PROPOSED CONSTRUCTION SITE MAP**  
Scale 1":300'



**DAVIS ENGINEERING SERVICE, INC.**

DAVIS ENGINEERING SERVICE, INC.  
1448 S. W. 10TH AVE.  
ALAMOSA, COLORADO 81101  
PHONE: (719) 581-3000  
FAX: (719) 581-1712

PROJECT	DATE	APPROVED	DATE
CMP/WSS	8/23/24	CMP	
WSS			

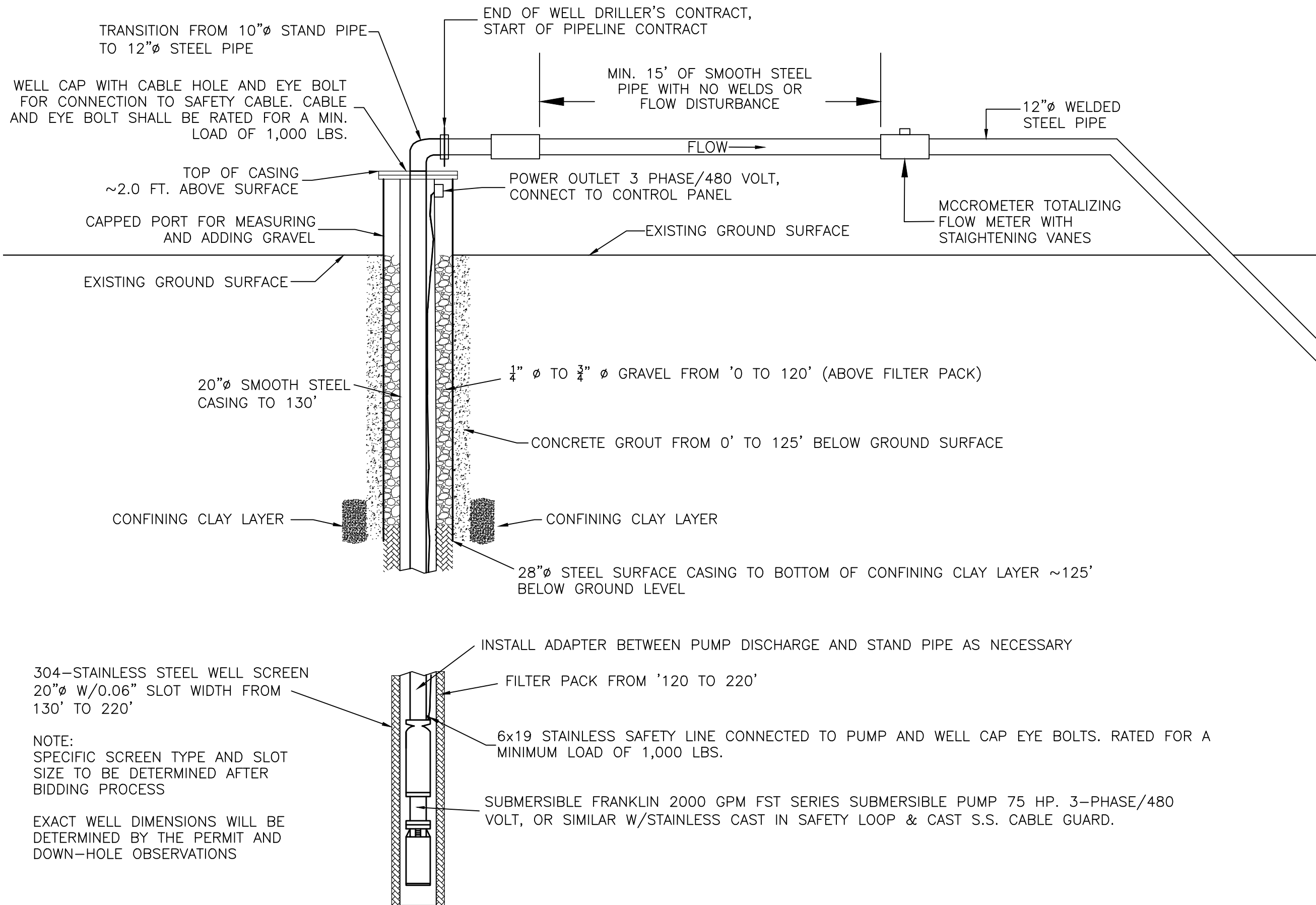
0" 1" 1.5" 2"  
ELEVATION BASE ASSUMED



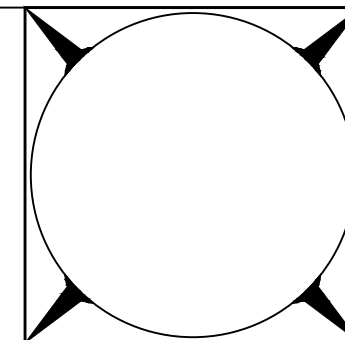
CLIENT  
Special Improvement District No. 5  
8805 Independence Way  
Alamosa, CO 81101

PROJECT  
Large Capacity Augmentation Well #2

TITLE  
Proposed Construction Site Map



AUGMENTATION WELL SUBSURFACE DETAIL  
NOT TO SCALE

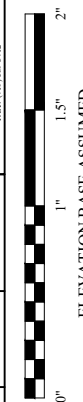


DAVIS ENGINEERING SERVICE, INC.



THIS DRAWING IS THE PROPERTY OF DAVIS ENGINEERING SERVICE, INC. AND IS NOT TO BE REPRODUCED, COPIED, OR DISTRIBUTED WITHOUT THE WRITTEN APPROVAL OF DAVIS ENGINEERING SERVICE, INC.

PROJECT	AS NOTED	DATE	8/23/24
DESIGNED BY	CMP	APPROVED BY	CMP
CHECKED BY		DATE	
REV.		DATE	APPROVED



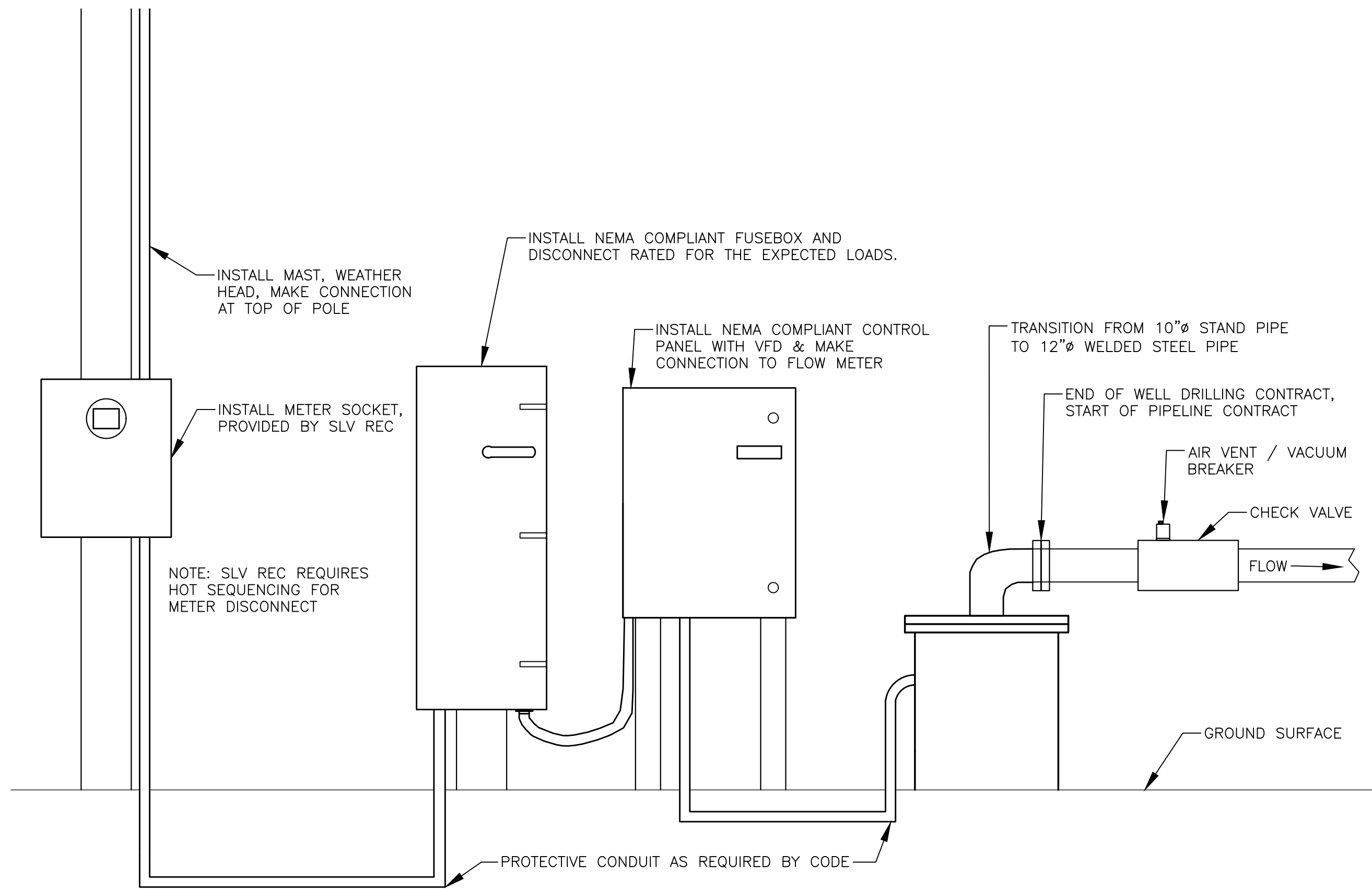
Client  
Special Improvement District No. 5  
8805 Independence Way  
Alamosa, CO 81101

Well #2  
Large Capacity Augmentation Well #2

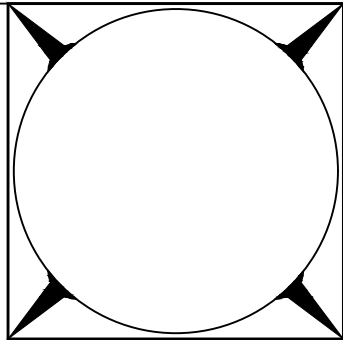
Well Subsurface Detail

E02068

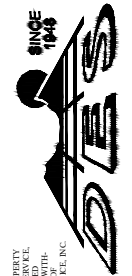
Sheet 5 of 7



AUGMENTATION WELL SURFACE DETAIL  
NOT TO SCALE



**DAVIS ENGINEERING SERVICE, INC.**



THIS DRAWING IS THE PROPERTY OF DAVIS ENGINEERING SERVICE, INC. AND IS NOT TO BE REPRODUCED, COPIED, OR TRANSMITTED IN ANY FORM OR BY ANY MEANS WITHOUT THE WRITTEN APPROVAL OF DAVIS ENGINEERING SERVICE, INC.

DATE	8/23/24
AS NOTED	
CHECKED	
APPROVED	CMP
DESIGNED	
DRAWN	
SCALE	

DAVIS ENGINEERING SERVICE, INC.  
ALAMOSA, COLORADO 81101  
PHONE: (719) 589-3000  
FAX: (719) 589-1712

0" 1" 1.5" 2"  
ELEVATION BASE ASSUMED



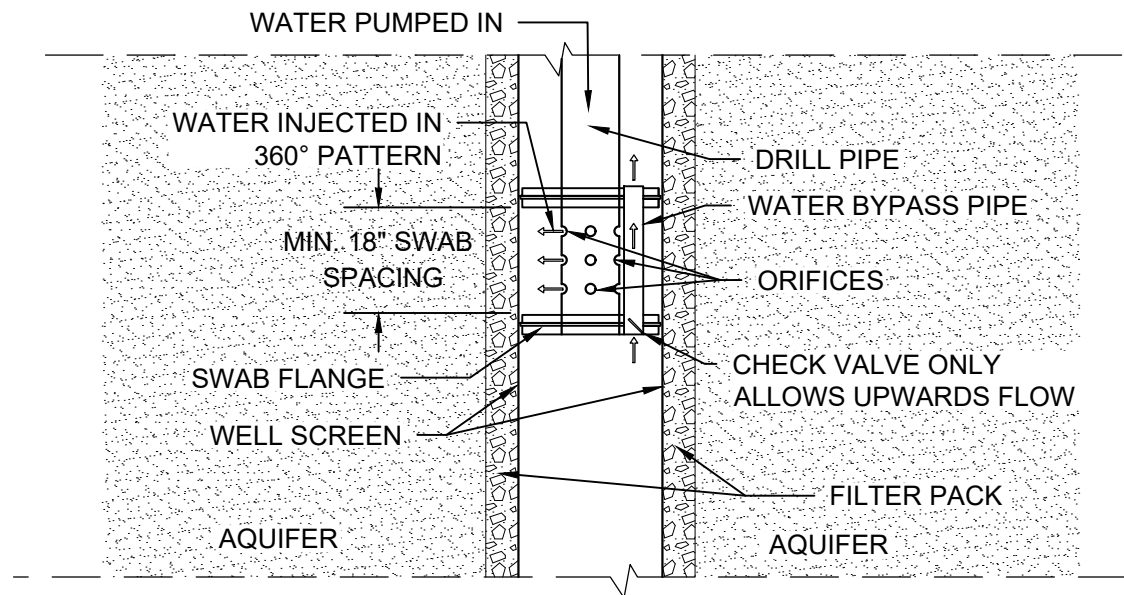
Client  
Special Improvement District No. 5  
8805 Independence Way  
Alamosa, CO 81101

Project  
Large Capacity Augmentation Well #2

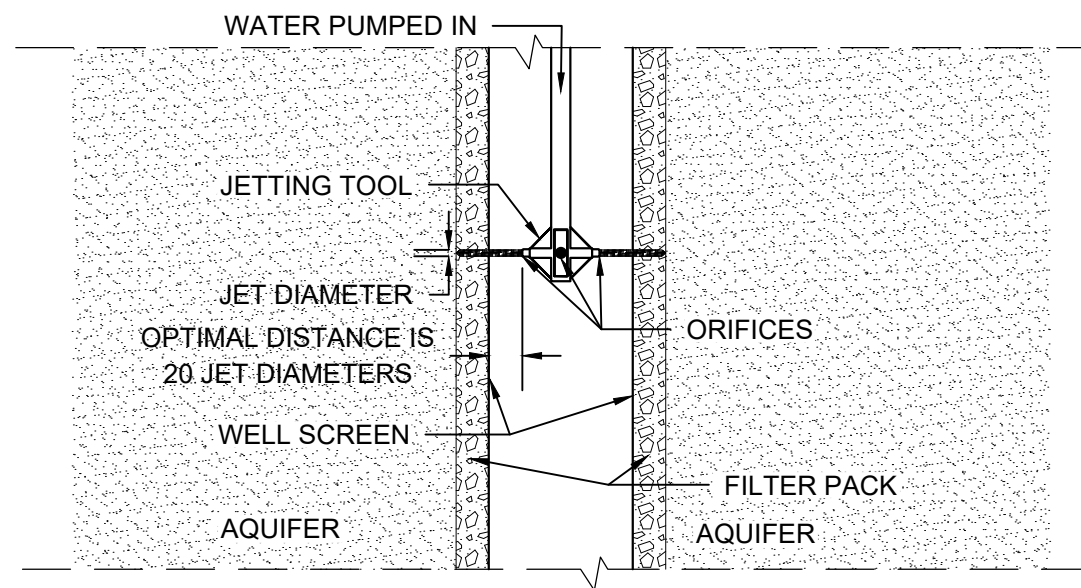
Well Surface Detail

E02068

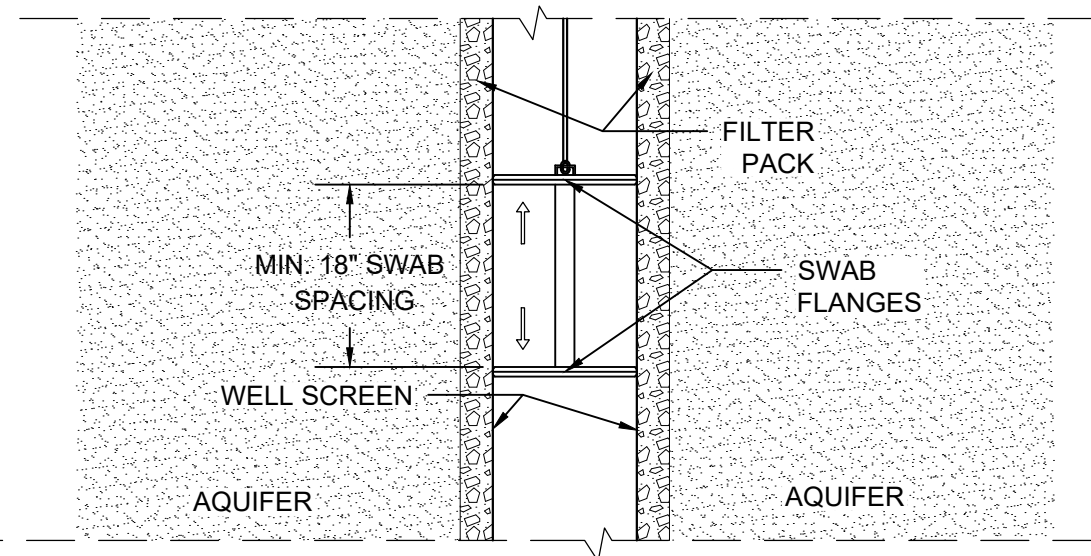
Sheet 6 of 7



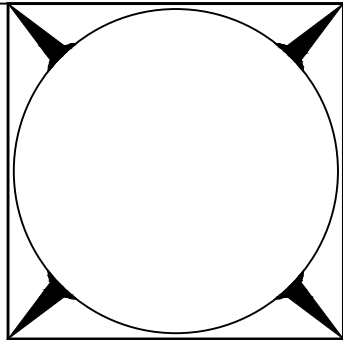
COMBINED JETTING AND SURGING DEVELOPMENT DETAIL  
NOT TO SCALE



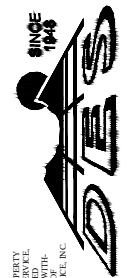
JETTING DEVELOPMENT DETAIL  
NOT TO SCALE



SURGE BLOCK DEVELOPMENT DETAIL  
NOT TO SCALE

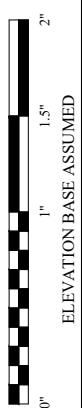


DAVIS ENGINEERING SERVICE, INC.



THIS DRAWING IS THE PROPERTY OF DAVIS ENGINEERING SERVICE, INC. AND IS NOT TO BE REPRODUCED OR COPIED WITHOUT THE WRITTEN APPROVAL OF DAVIS ENGINEERING SERVICE, INC.

DATE	AS NOTED	DATE	8/23/24
CHECKED	CMP	APPROVED	CMP
DESIGNED	CMP/WSS	DATE	
DRAWN	WSS	DATE	
REV.	DATE	BY	APP'D.



Client  
Special Improvement District No. 5  
8805 Independence Way  
Alamosa, CO 81101

Project  
Large Capacity Augmentation Well #2

E02068